

SECTION 7-1

750 SERIES

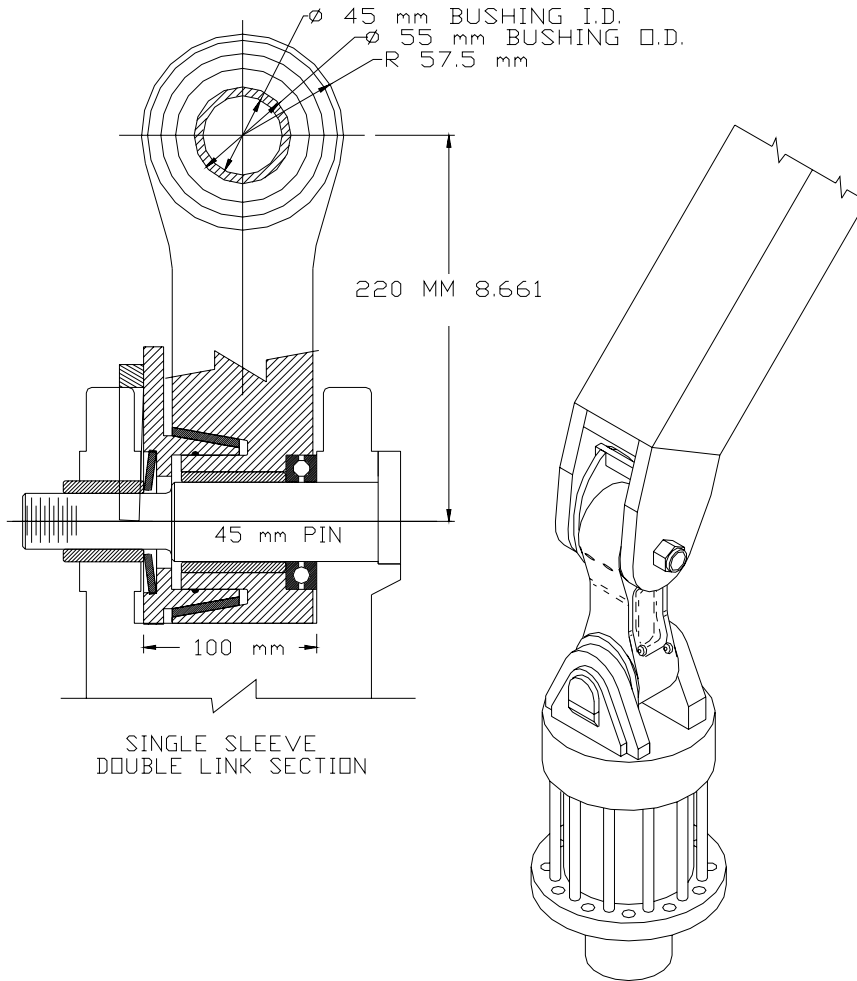
7-1-2	Snubber Assembly - Parts
7-1-3	Mounting and Operational Instructions
7-1-5	B3750
7-1-7	B3750-1
7-1-9	B3750-2
7-1-11	B3750-3
7-1-13	B3750-4

INTERNAL MOUNT

**750 SERIES
DOUBLE**

SNUBBER ASSEMBLY – PARTS

INDEXATOR REPLACEMENT -	GV11S	AV11S	GV12S	AV12S
	GV14S	AV14S	GV15S	GV17S



PATENTED - U.S. No. 6,264,013
 - Canada No. 2,257,056
 - Sweden No. 521,177
 - Finland No. 116,136
 - Other patents pending

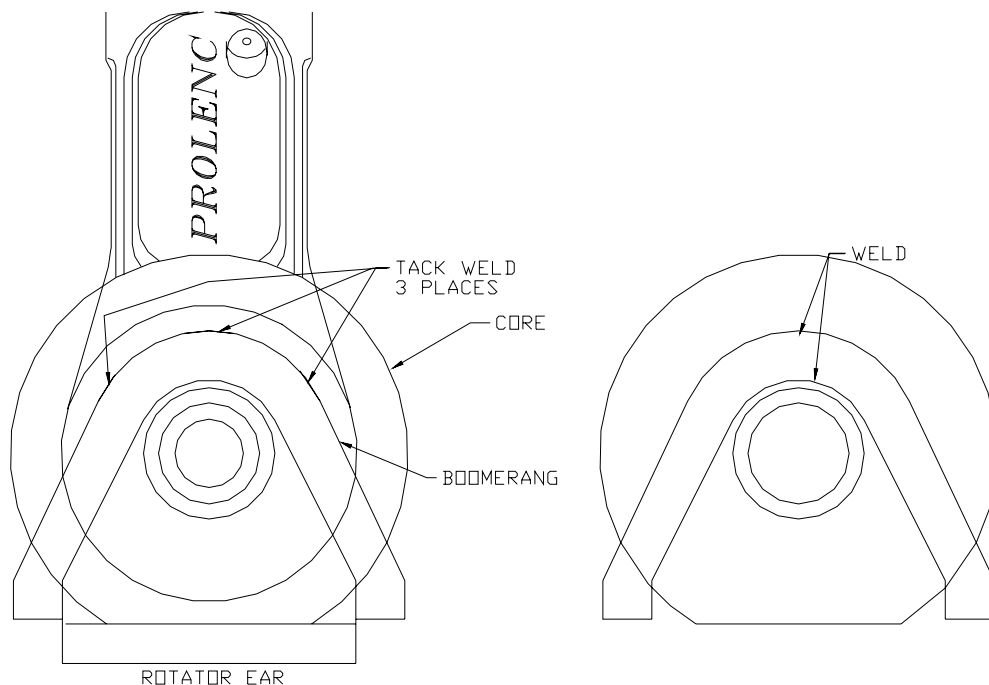
INTERNAL MOUNT

**750 SERIES
DOUBLE**

MOUNTING AND OPERATIONAL INSTRUCTIONS

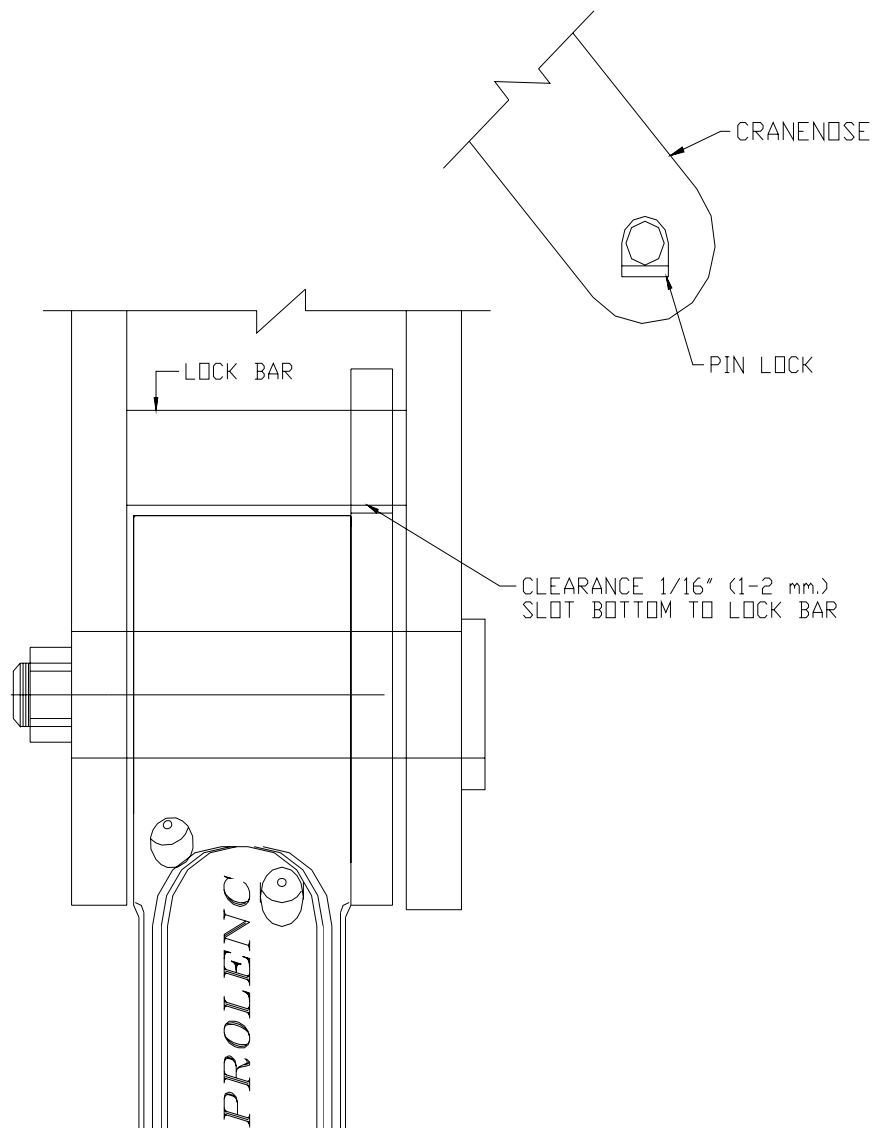
ROTATE YOKE MOUNT

- 1) Install link, core & pin into rotator. Place boomerang over rotator ear, **tight fit required**. To spread ears, grind or Zip cut $\frac{3}{4}$ thru center of boomerang inside and bend ears out. To close boomerang ears, grind or Zip cut $\frac{3}{4}$ thru centre of boomerang outside and bend ears in. Tack weld boomerang to core. Remove core and weld boomerang to core, inside and outside.
- 2) Pack bearing with grease.
- 3) Grease friction sleeve, B3T-865 (zinc) only. **B3T-760 (composite) to be dry fit**, for maximum component life, a tight fit core to rotator top is necessary, build-up if required. Install concave side of spring-washer towards core, insert link assembly between ears of rotator.
- 4) Grease pin and install with the headed end of pin mating with original pin lock on rotator.
- 5) Lubricate tension collar, inside and out with never seeze – install collar and nut.



CRANE NOSE MOUNT

- 1) Install link into crane in same manner as rotate yoke mount. For crane nose width larger than 100 mm. Install spacers provided and weld spacers to crane nose after installation.
- 2) Rotate core in crane nose to engage original lock plate. Core lock provided if required. Trim to length and weld into position. **Minimum 1/16" (2 mm)** – clearance required, lock plate to slot bottom as noted below.
- 3) Pin lock on crane nose may need to be moved to opposite side dependant upon rotator position.



INTERNAL MOUNT

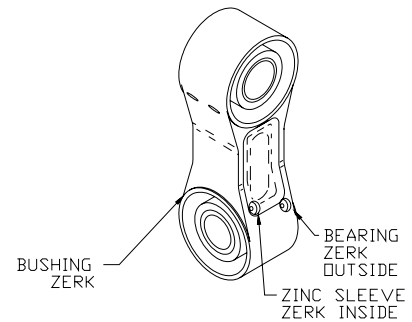
**750 SERIES
DOUBLE**

MOUNTING AND OPERATIONAL INSTRUCTIONS

SERVICE AND ADJUSTMENT

- 4) To adjust, tighten nut against tension collar.
- 5) Composite sleeve B3T-760 – maintenance free - **lightly adjust for first 1/2 hour to “run-in” sleeve** – then adjust to desired attachment control.
- 6) **Maximum adjustment** of nut is **3/4 turn** after nut has contacted tension collar.
- 7) Grease zinc sleeve, B3T-865 every **10 hours**.
- 8) Greases with 5% - 6% MOLY are recommended:

Military Spec. MIL G23549C
-Lubriplate 176 5⁰F./-15⁰C.
-Lubriplate 3000 15⁰F./-9.5⁰C.
-Lubriplate 3000w -30⁰F./-34.5⁰C.
-or EQUIVALENT



******Load must be maintained on core at all times
to avoid damage to core or link******

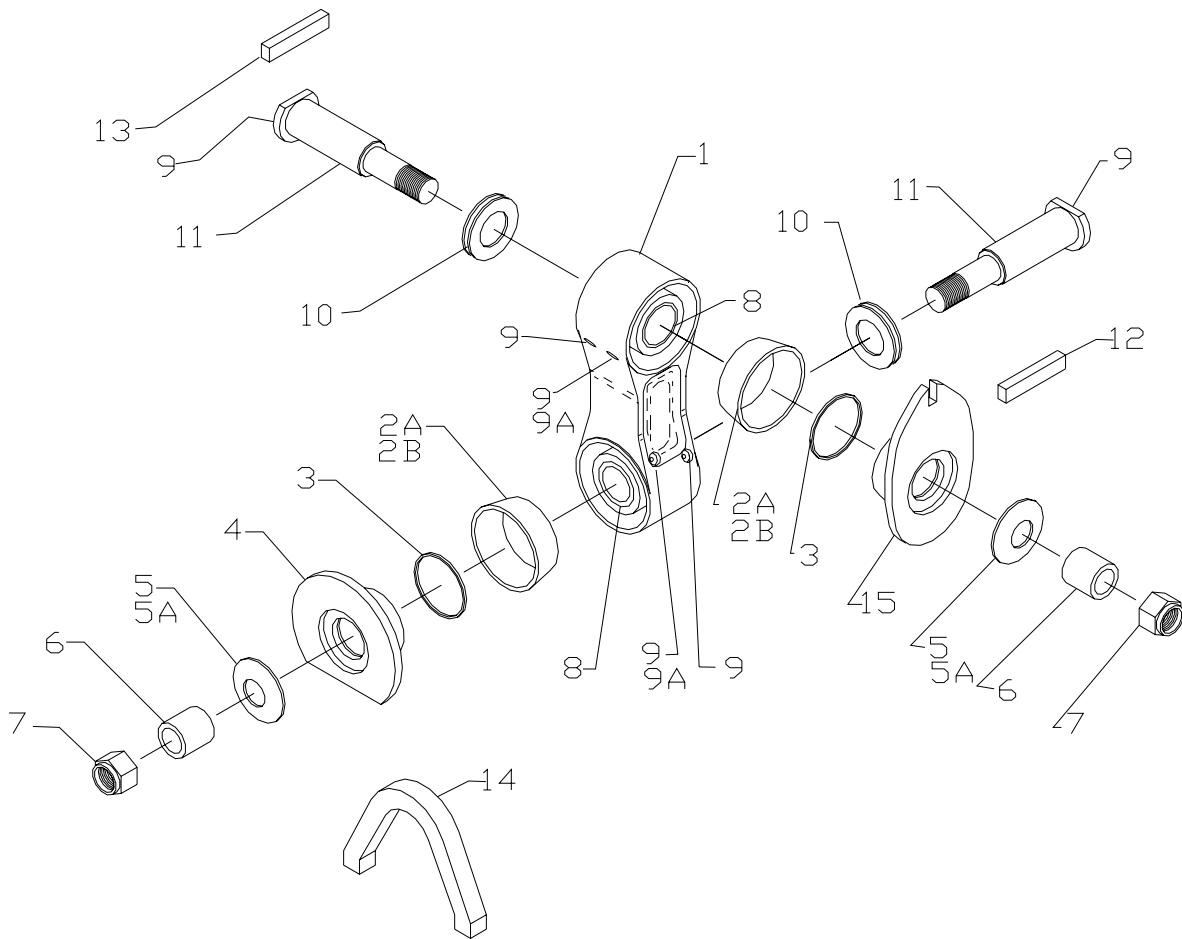
CAUTION:

Only tension snubber to maintain adequate control of attachment, dependant upon application and attachment weight. Over tensioning of snubber reduces friction sleeve life.

INTERNAL MOUNT
B3750

DOUBLE

6 3/4" (170 mm.) O.D. CRANENOSE
USE WITH INDEXATOR ROTATORS
AV11S, GV11S, AV12S, GV12S, GV15S, GV104S, AV14S, GV14S & GV17S



**INTERNAL MOUNT
B3750**

DOUBLE

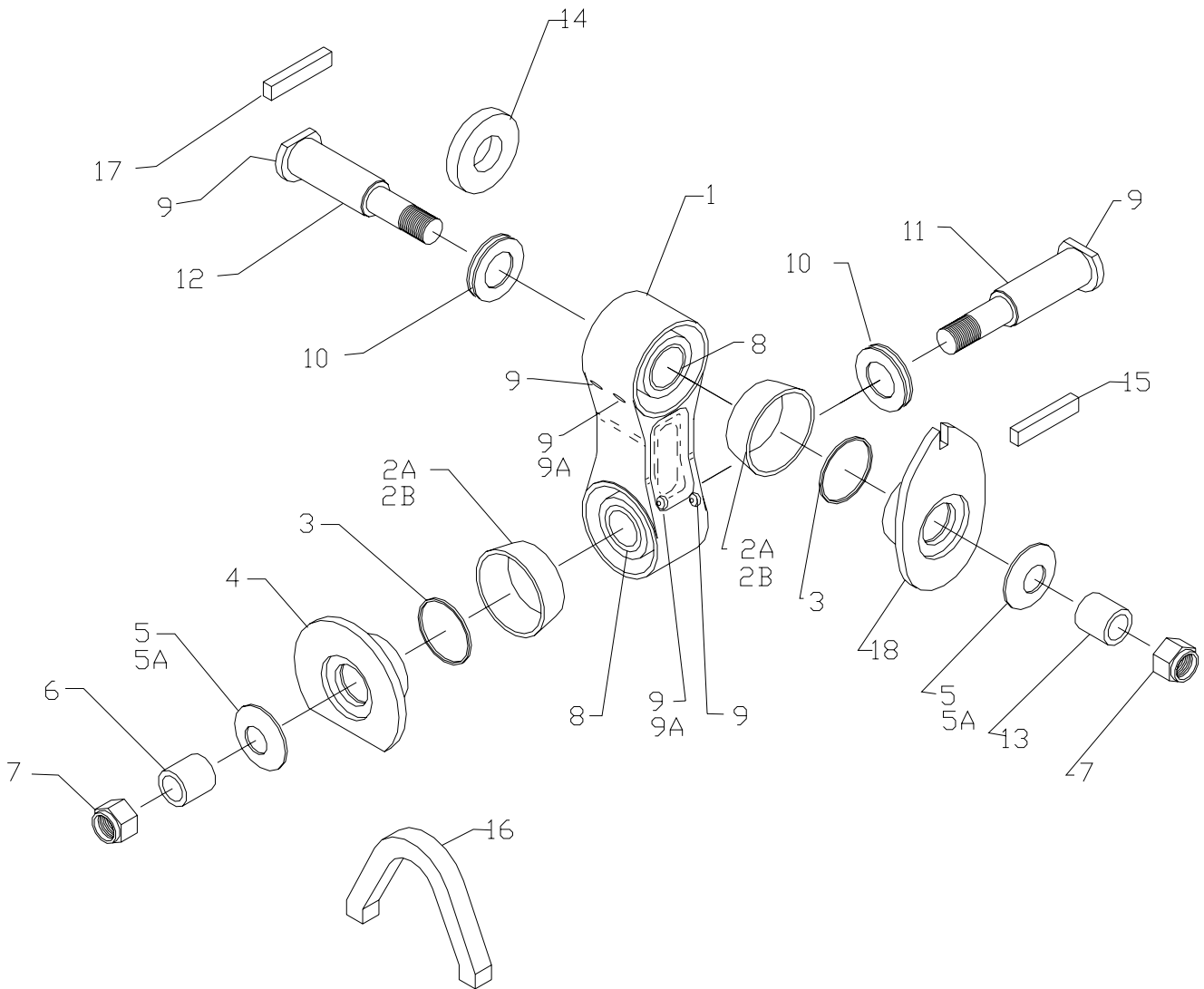
6 3/4" (170 mm.) O.D. CRANENOSE
USE WITH INDEXATOR ROTATORS
AV11S, GV11S, AV12S, GV12S, GV15S, GV104S, AV14S, GV14S & GV17S

ITEM	PART#	DESCRIPTION	QTY
1	B3T-750	DOUBLE LINK	1
2A	B3T-760KIT	FRICTION SLEEVE – COMPOSITE *INCLUDES B3T-825 ORING*	2
2B	B3T-865	FRICTION SLEEVE – ZINC	2
3	B3T-825	O-RING – USE WITH B3T-760 COMPOSITE SLEEVE	2
4	B3T-1385	CORE - ROTATOR	1
5	B3T-775	SPRING 5MM – USE WITH B3T-865 ZINC SLEEVE	2
5A	B3T-890	SPRING 4MM – USE WITH B3T-760 COMP SLEEVE	2
6	B3T-770	TENSION COLLAR 2" (50.8 mm.) LONG	2
7	B3T-800	NUT 1 3/8" –12 NYLOCK JAM	2
8	B3T-980B	BUSHING – HARD BRONZE	2
9	B3T-1130	ZERK 1/4-28 STRAIGHT	4
9A	B3T-1190	PLUG – USE WITH COMPOSITE SLEEVE	2
10	B3T-1035	BEARING	2
11	B3T-780	PIN	2
12	B3T-1370	CORE STOP FOR CRANE NOSE - 18MM THICK	1
13	B3T-840	PIN LOCK	1
14	B3T-1390	BOOMERANG – WELD TO B3T-1385 CORE	1
15	B3T-1395	CORE – CRANE 18mm SLOT	1

INTERNAL MOUNT
B3750-1

DOUBLE

USE WITH CRANAB CRANE
7.875" (200 mm.) OUTSIDE WIDTH
USE WITH INDEXATOR ROTATORS
AV11S, GV11S, AV12S, GV12S, GV15S, GV104S, AV14S, GV14S & GV17S



**INTERNAL MOUNT
B3750-1**

DOUBLE

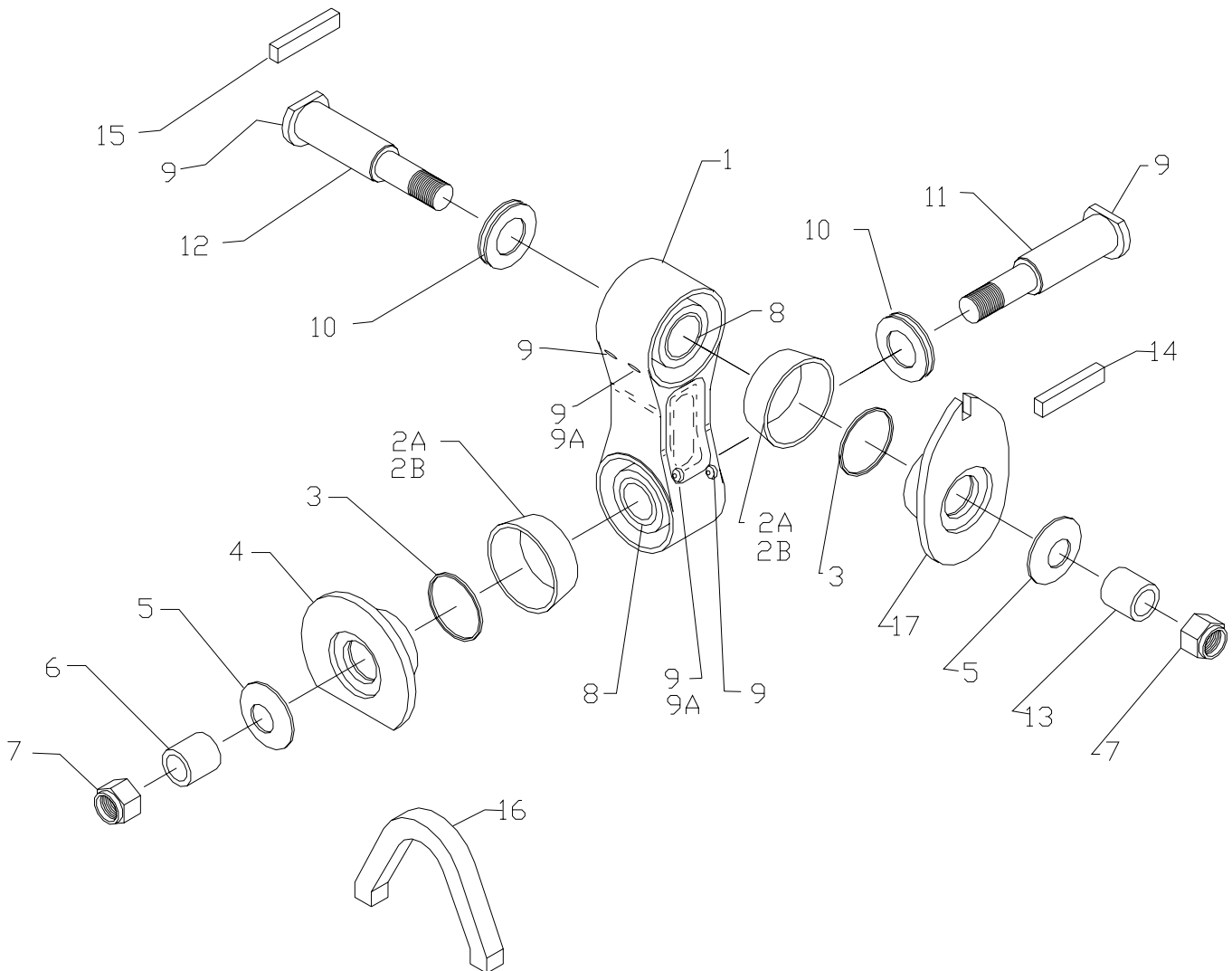
USE WITH CRANAB CRANE
7.875" (200 mm.) OUTSIDE WIDTH
USE WITH INDEXATOR ROTATORS
AV11S, GV11S, AV12S, GV12S, GV15S, GV104S, AV14S, GV14S & GV17S

ITEM	PART#	DESCRIPTION	QTY
1	B3T-750	DOUBLE LINK	1
2A	B3T-760KIT	FRICITION SLEEVE – COMPOSITE * INCLUDES B3T-825 ORING*	2
2B	B3T-865	FRICITION SLEEVE – ZINC	2
3	B3T-825	O-RING – USE WITH B3T-760 COMPOSITE SLEEVE	2
4	B3T-1385	CORE – ROTATOR	1
5	B3T-775	SPRING 5MM – USE WITH B3T-865 ZINC SLEEVE	2
5A	B3T-890	SPRING 4MM – USE WITH B3T-760 COMP SLEEVE	2
6	B3T-770	TENSION COLLAR 2" (50.8 mm.) LONG	1
7	B3T-800	NUT 1 3/8" –12 NYLOCK JAM	2
8	B3T-980B	BUSHING – HARD BRONZE	2
9	B3T-1130	ZERK 1/4-28 STRAIGHT	4
9A	B3T-1190	PLUG – USE WITH COMPOSITE SLEEVE	2
10	B3T-1035	BEARING	2
11	B3T-780	PIN – ROTATOR – 8.625" (219 mm.) LONG	1
12	B3T-795	PIN – CRANE NOSE – 9.8" (249 mm.) LONG	1
13	B3T-790	TENSION COLLAR – 2.59" (66 mm.) LONG	1
14	B3T-805	SPACER – 4.5"(114mm)x1.8"(46mm)x3/4"(20mm)Thick	2
15	B3T-1370	CORE STOP FOR CRANE NOSE – 18MM THICK	1
16	B3T-1390	BOOMERANG – WELD TO B3T-1385 CORE	1
17	B3T-840	PIN LOCK	1
18	B3T-1395	CORE – CRANE 18mm SLOT	1

INTERNAL MOUNT
B3750-2

DOUBLE

USE WITH TIMBERJACK / LOGLIFT CRANE
5.7" (145-150 mm.) OUTSIDE WIDTH
USE WITH INDEXATOR ROTATORS
AV11S, GV11S, AV12S, GV12S, GV15S, GV104S, AV14S, GV14S & GV17S



**INTERNAL MOUNT
B3750-2**

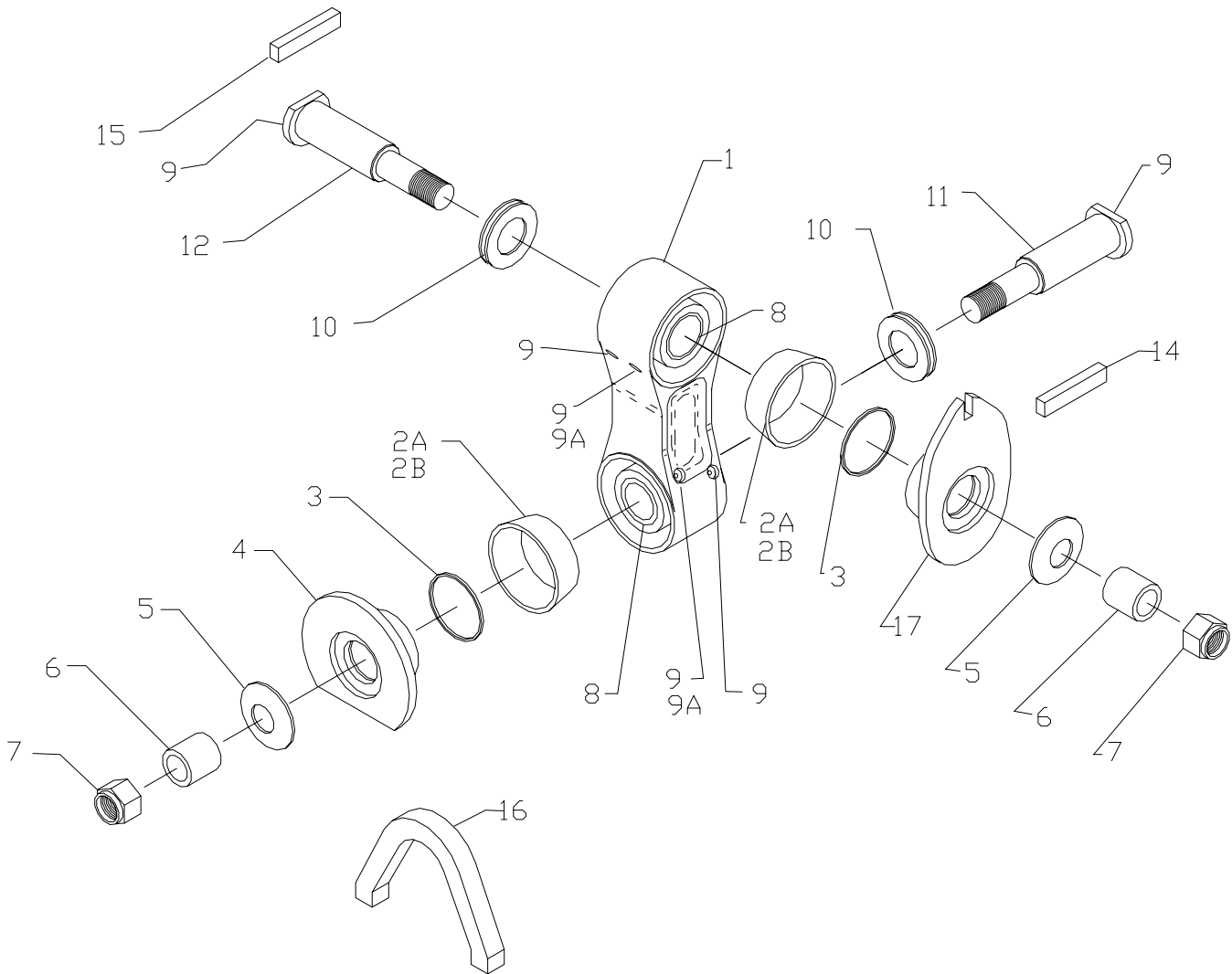
USE WITH TIMBERJACK / LOGLIFT CRANE
5.7" (145-150 mm.) OUTSIDE WIDTH
USE WITH INDEXATOR ROTATORS
AV11S, GV11S, AV12S, GV12S, GV15S, GV104S, AV14S, GV14S & GV17S

ITEM	PART#	DESCRIPTION	QTY
1	B3T-750	DOUBLE LINK	1
2A	B3T-760KIT	FRICTION SLEEVE – COMPOSITE * INCLUDES B3T-825 ORING *	2
2B	B3T-865	FRICTION SLEEVE – ZINC	2
3	B3T-825	O-RING – USE WITH B3T-760 COMPOSITE SLEEVE	2
4	B3T-1385	CORE - ROTATOR	1
5	B3T-775	SPRING 5MM – USE WITH B3T-865 ZINC SLEEVE	2
5A	B3T-890	SPRING 4MM – USE WITH B3T-760 COMP SLEEVE	2
6	B3T-770	TENSION COLLAR 2" (50.8 mm.) LONG	1
7	B3T-800	NUT 1 3/8" –12 NYLOCK JAM	2
8	B3T-980B	BUSHING – HARD BRONZE	2
9	B3T-1130	ZERK 1/4-28 STRAIGHT	4
9A	B3T-1190	PLUG – USE WITH COMPOSITE SLEEVE	2
10	B3T-1035	BEARING	2
11	B3T-780	PIN – ROTATOR – 8.625" (219 mm.) LONG	1
12	B3T-815	PIN – CRANE NOSE – 7.95" (202 mm.) LONG	1
13	B3T-820	TENSION COLLAR – 1.625" (41 mm.) LONG	1
14	B3T-1370	CORE STOP FOR CRANE NOSE – 18MM THICK	1
15	B3T-840	PIN LOCK	1
16	B3T-1390	BOOMERANG – WELD TO B3T-1385 CORE	1
17	B3T-1395	CORE – CRANE 18mm SLOT	1

DOUBLE

INTERNAL MOUNT
B3750-3

USE WITH TIMBERJACK / DEERE CRANE
6.89" (175-150 mm.) OUTSIDE WIDTH
USE WITH INDEXATOR ROTATORS
AV11S, GV11S, AV12S, GV12S, GV15S, GV104S, AV14S, GV14S & GV17S



DOUBLE

**INTERNAL MOUNT
B3750-3**

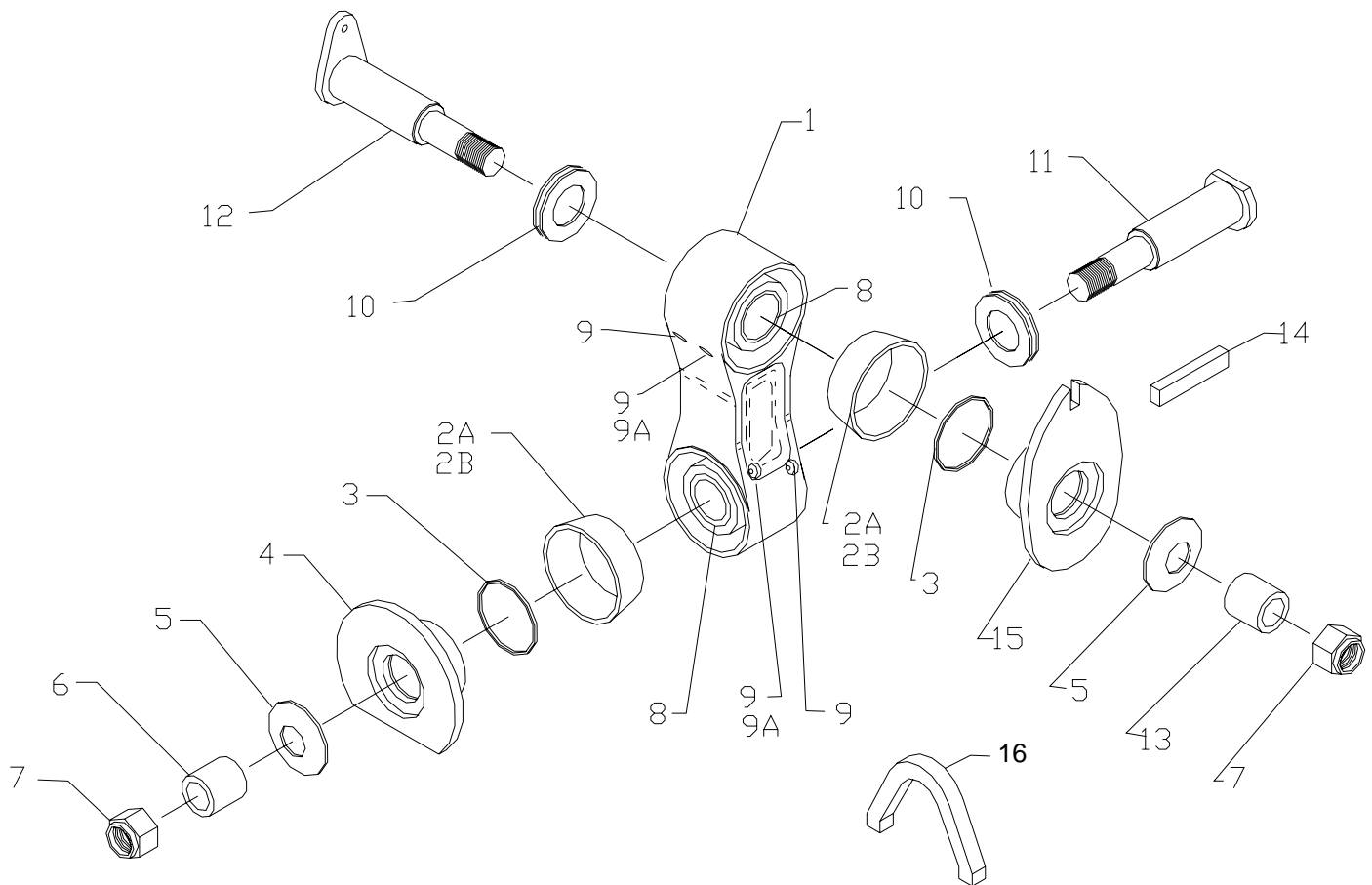
USE WITH TIMBERJACK / DEERE CRANE
6.89" (175-150 mm.) OUTSIDE WIDTH
USE WITH INDEXATOR ROTATORS
AV11S, GV11S, AV12S, GV12S, GV15S, GV104S, AV14S, GV14S & GV17S

ITEM	PART#	DESCRIPTION	QTY
1	B3T-750	DOUBLE LINK	1
2A	B3T-760	FRICITION SLEEVE – COMPOSITE	2
2B	B3T-865	FRICITION SLEEVE – ZINC	2
3	B3T-825	O-RING – USE WITH B3T-760 COMPOSITE SLEEVE	2
4	B3T-1385	CORE, ROTATOR	1
5	B3T-775	SPRING - 5MM THICK USE WITH ZINC SLEEVE	2
5A	B3T-890	SPRING - 4MM THICK USE WITH COMP SLEEVE	2
6	B3T-770	TENSION COLLAR 2" (50.8 mm.) LONG	1
7	B3T-800	NUT 1 3/8" –12 NYLOCK JAM	2
8	B3T-980B	BUSHING – HARD BRONZE	2
9	B3T-1130	ZERK 1/4-28 STRAIGHT	4
9A	B3T-1190	PLUG – USE WITH COMPOSITE SLEEVE	2
10	B3T-1035	BEARING	2
11	B3T-780	PIN – ROTATOR – 8.625" (219 mm.) LONG	1
12	B3T-875	PIN – CRANE NOSE – 8.785" (225 mm.) LONG	1
13	B3T-870	TENSION COLLAR – 2.250" (57 mm.) LONG	1
14	B3T-1370	CORE STOP FOR CRANE NOSE - 18MM THICK	2
15	B3T-840	PIN LOCK	2
16	B3T-1390	BOOMERANG – WELD TO B3T-1385 CORE	1
17	B3T-1395	CORE – CRANE 18mm SLOT	1

INTERNAL MOUNT
B3750-4

DOUBLE

USE WITH LOGLIFT CRANE
USE WITH INDEXATOR ROTATORS
GV104S, AV11S, GV11S, AV12S, GV12S, AV14S, GV14S, GV15S & GV17S



**INTERNAL MOUNT
B3750-4**

DOUBLE

USE WITH CRANE
USE WITH INDEXATOR ROTATORS
GV104S, GV11S, GV12S, GV14S, GV15S & GV17S

ITEM	PART#	DESCRIPTION	QTY
1	B3T-750	DOUBLE LINK	1
2A	B3T-760KIT	FRICION SLEEVE – COMPOSITE * INCLUDES B3T-825 ORING *	2
2B	B3T-865	FRICION SLEEVE – ZINC	2
3	B3T-825	O-RING – USE WITH COMPOSITE SLEEVE	2
4	B3T-1385	CORE - ROTATOR	1
5	B3T-775	SPRING 5MM – USE WITH B3T-865 ZINC SLEEVE	2
5A	B3T-890	SPRING 4MM – USE WITH B3T-760 COMP SLEEVE	2
6	B3T-770	TENSION COLLAR 2" (50.8 mm.) LONG	1
7	B3T-800	NUT 1 3/8" –12 NYLOCK JAM	2
8	B3T-980B	BUSHING – HARD BRONZE	2
9	B3T-1130	ZERK 1/4-28 STRAIGHT	4
9A	B3T-1190	PLUG – USE WITH COMPOSITE SLEEVE	2
10	B3T-1035	BEARING	2
11	B3T-780	PIN – ROTATOR – 8.625" (219 mm.) LONG	1
12	B3T-1275	PIN – CRANE NOSE – 8.785" (225 mm.) LONG	1
13	B3T-820	TENSION COLLAR – 2.250" (57 mm.) LONG	1
14	B3T-1370	CORE STOP FOR CRANE NOSE - 18MM THICK	1
15	B3T-1395	CORE – CRANE 18mm SLOT	1
16	B3T-1390	BOOMERANG – WELD TO B3T-1385 CORE	1