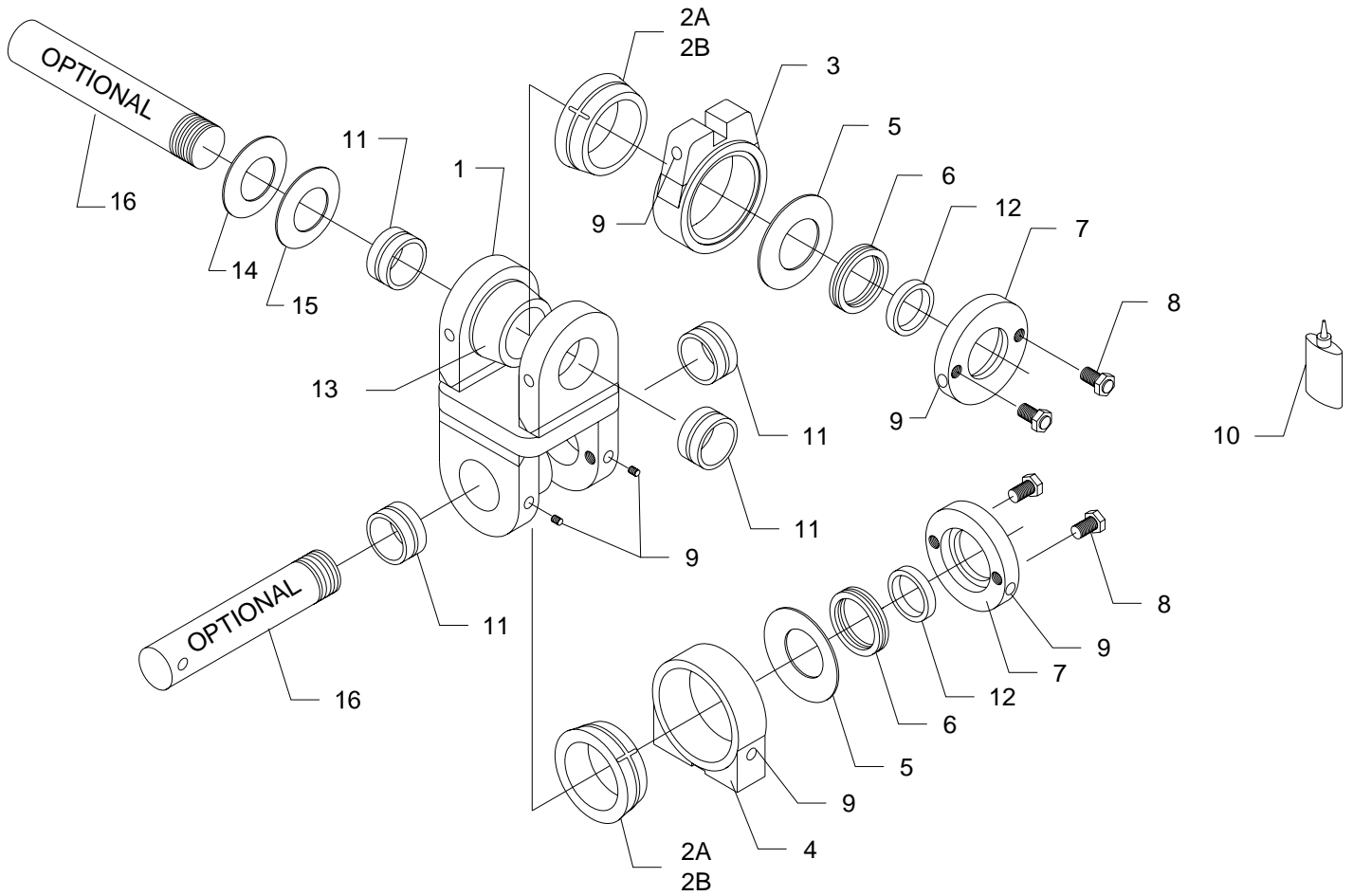


INTERNAL MOUNT

B31500-9

USE WITH CAT GRAPPLE
535B-545-545B
2 1/2" PIN O.D



INTERNAL MOUNT

B31500-9

USE WITH CAT GRAPPLE
 535B-545-545B
 2 1/2" PIN O.D

ITEM	PART#	DESCRIPTION	QTY
1	B3T-565	LINK ASS'Y (3" I.D. BORE)	1
2	B3T-390G	FRICTION SLEEVE (ZINC ALLOY ZA12)	2
OPT.	B3T-595	FRICTION SLEEVE (COMPOSITE MATERIAL)	2
3	B3T-230	SLOT HOUSING 1.030" SLOT	1
4	B3T-385	FOOT HOUSING	1
5	B3T-540	SPRING WASHER	2
6	B3S-155	BEARING (INCLUDES B3T-605 SEAL)	2
7	B3T-285	PRESSURE PLATE	2
8	B3T-290	ADJUSTING BOLT	4
9	B3T-105	ZERK	10
10	B3T-575	SLEEVE RETAINER LOCTITE 620 OR EQUIVALENT	1
11	B3T-255S	BUSHING (2.508" I.D. x 3.000" O.D.)	4
12	B3T-605	BEARING SEAL	2
13	B3T-515	CORE / EAR ASS'Y (3" BUSHING O.D.)	OPT.
14	B3T-195	SPACER 6" x 3 1/2" x 3/4" (1 TOP 1 BOTTOM)	2
15	B3T-225	SPACER 6" x 3 1/2" x 7/8" (1 TOP 1 BOTTOM)	2
16	B3T-1230	OPTIONAL, PIN 2 1/2" X 15 1/2" – 2 1/2" NF-12 x 3" LNG	OPT
		REPLACES CAT # 1687797	

**INTERNAL MOUNT
ESCO**

1500-9 SERIES

CAT 535B, 545, 545B

MOUNTING AND OPERATIONAL INSTRUCTIONS

INSTRUCTIONS:

2. Boom & Rotate yokes require tension collars beneath nut insert welded flush to inside of ear.
2. Centre spacers on pin holes 3/4" & 7/8", 1 each side equal, top & bottom, weld into position.
9. Boom Nose -- Housing lock plate between ears requires reinforcing gussets to prevent bending when snubber is set to maximum tension.
10. Rotate Yoke --Housing lock plate to be insert welded similar to a "T" section to prevent bending.
11. To set the tension, turn the adjusting bolts 1/2 turn, equally, on each adjusting bolt until the desired tension is achieved.

CAUTION: Over tensioning of the snubber reduces friction sleeve life.

12. To replace the friction sleeve, first loosen the adjusting bolts so the pressure plate, bearing, spring washer, and the housing can be removed, then pry off using a bar on each side. Heating of sleeve may be required.
13. Apply a thin even coat of loctite 620 (or equivalent) to core and inner friction sleeve surface before installation of sleeve.
14. **IMPORTANT: All service points on the snubber should be greased every 10 hours. (friction sleeve: Grease B3T-390G only).**

Greases with 5% - 6% MOLY are recommended:
Military Spec. MIL G23549C
-Lubriplate 176 5⁰F./-15⁰C.
-Lubriplate 3000 15⁰F./-9.5⁰C.
-Lubriplate 3000w -30⁰F./-34.5⁰C.

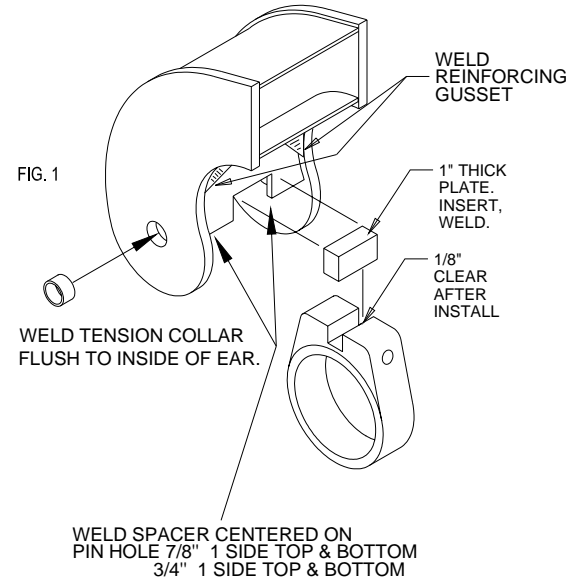
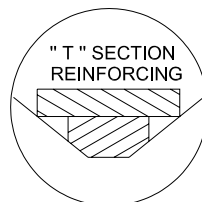


FIG. 2
ESCO
CAST

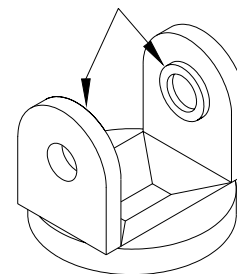


FIG. 3
ESCO

